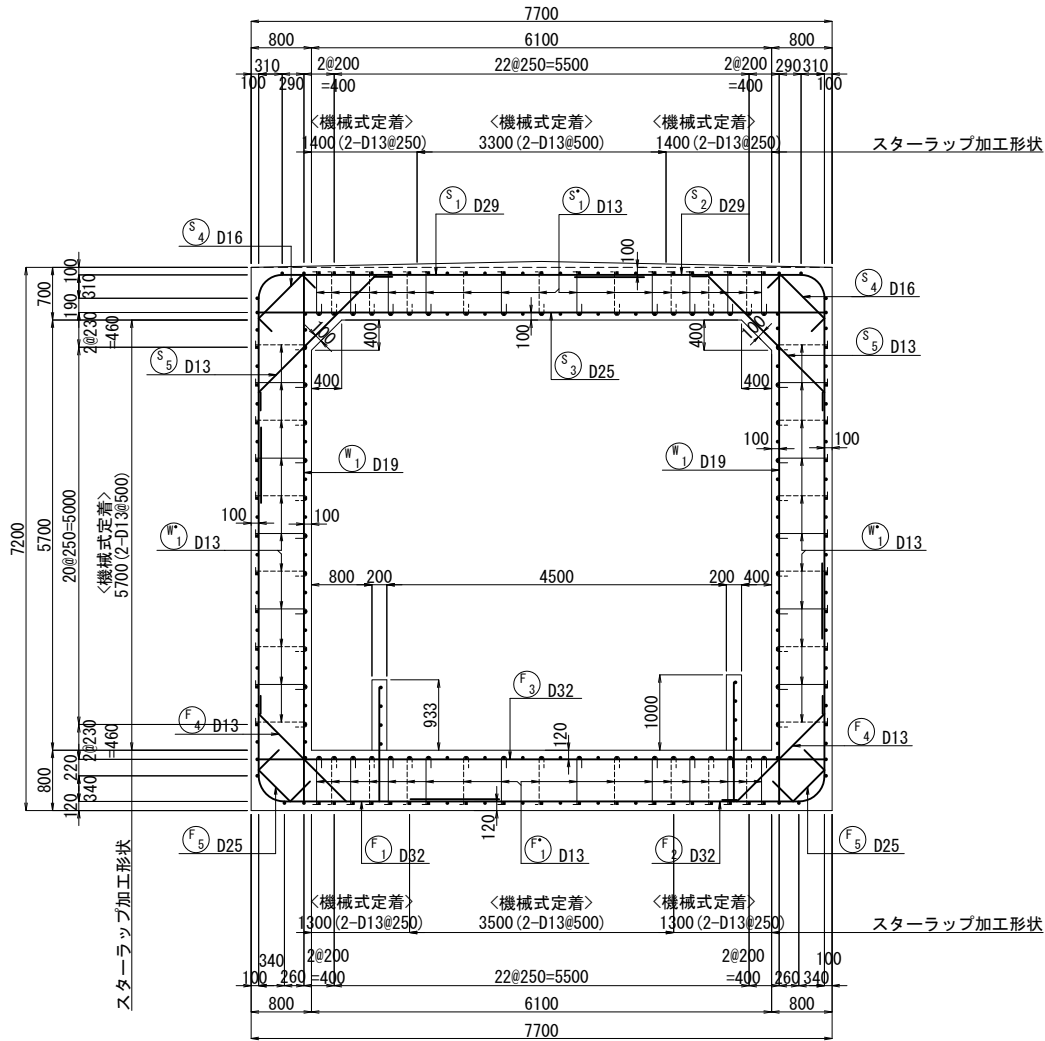


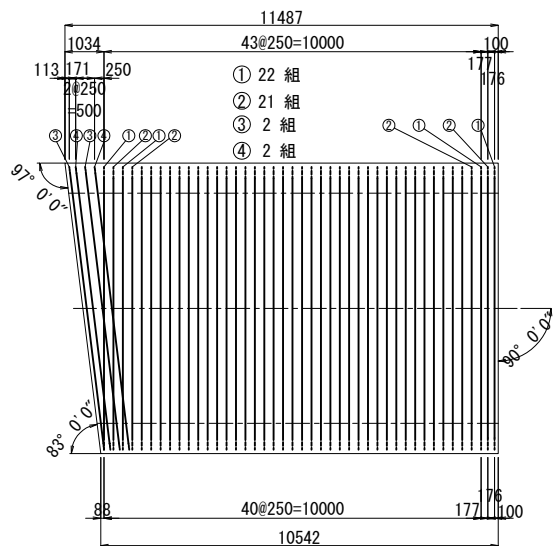
# 函渠工配筋図(1) S=1:50

[本体1ブロック]

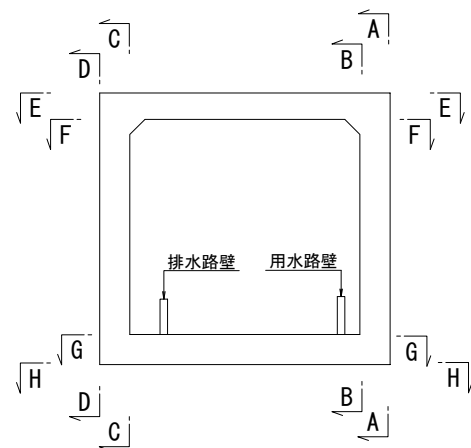
断面図



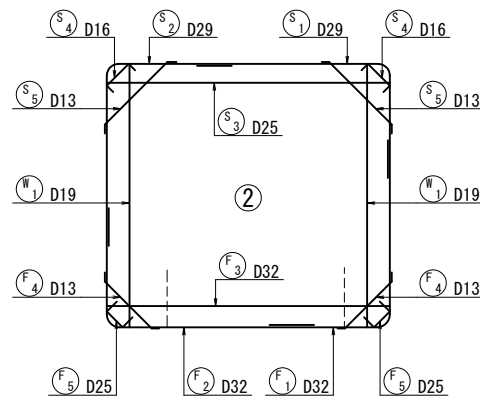
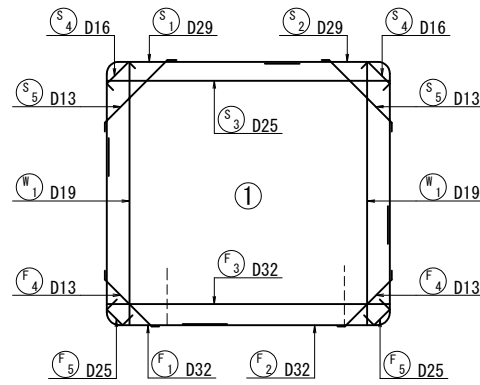
主鉄筋配置図



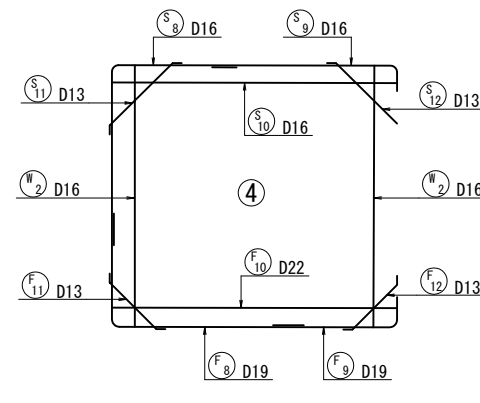
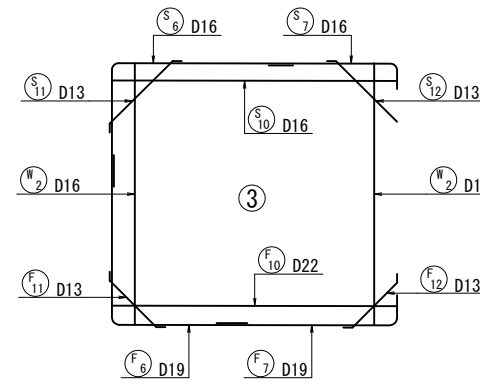
位置図  
(断面図)



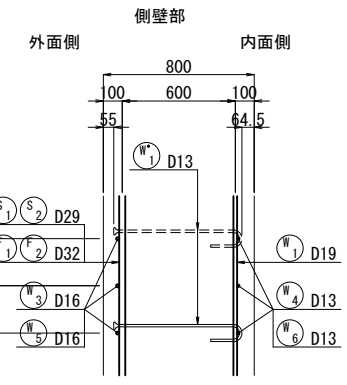
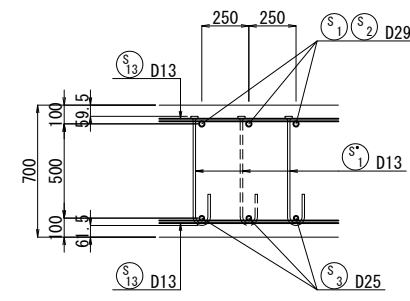
標準部  
ctc250



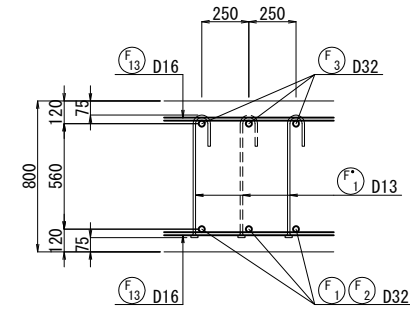
斜角部  
ctc250



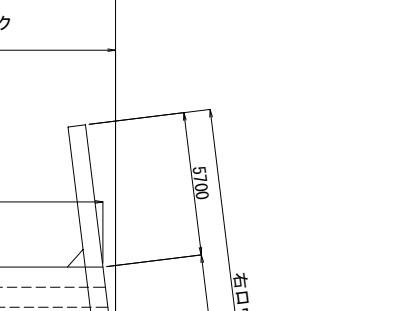
標準部  
頂版部



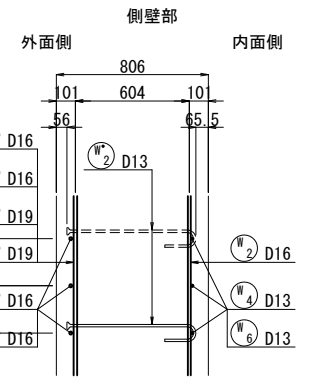
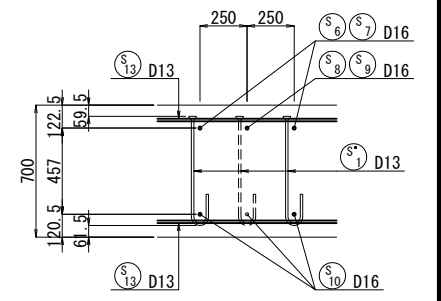
側壁部



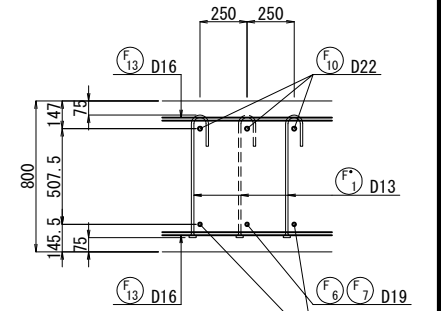
底板部



斜角部  
頂版部



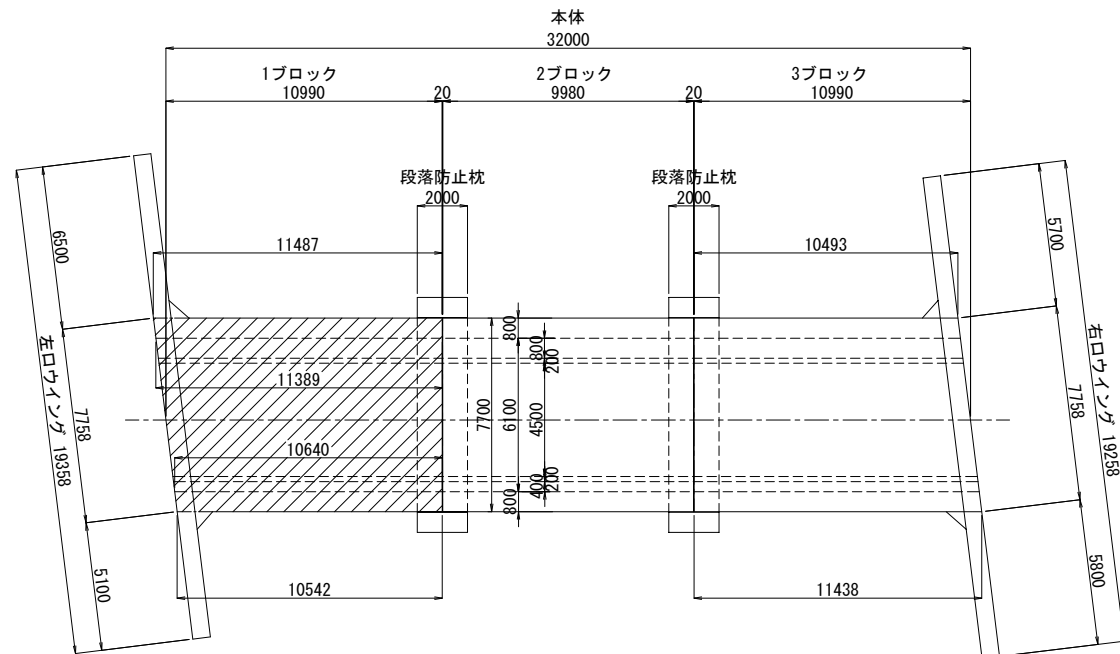
側壁部



底板部



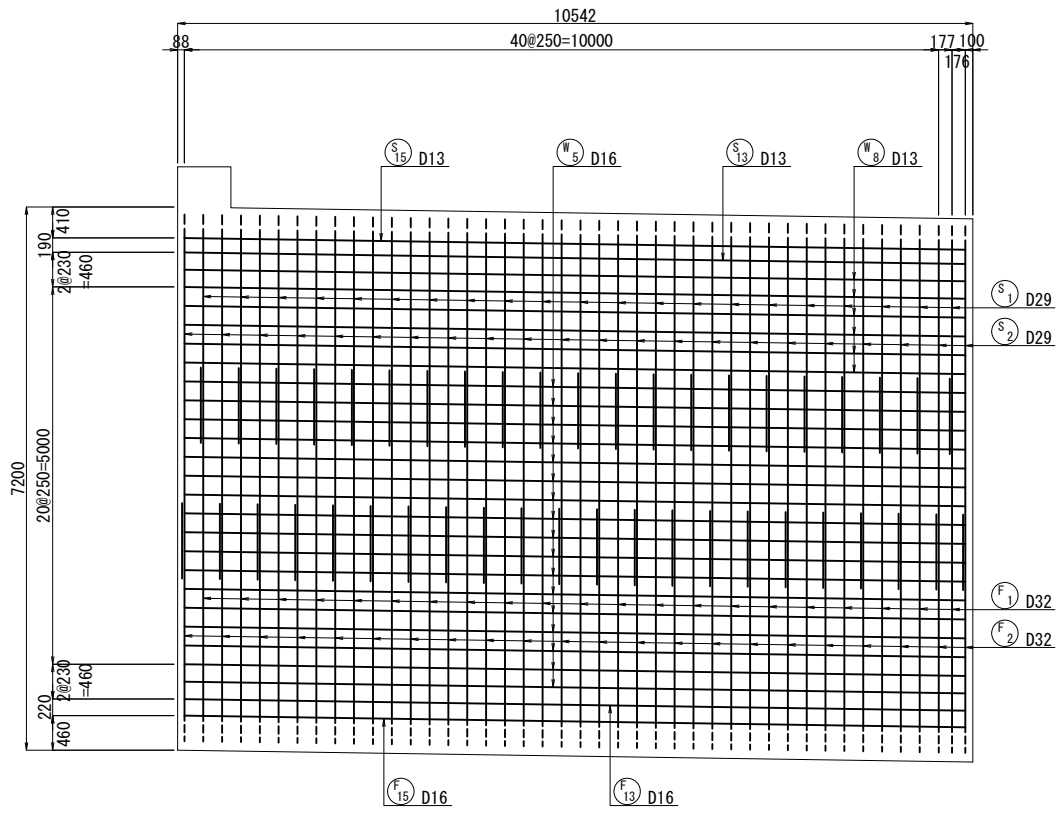
全体位置図



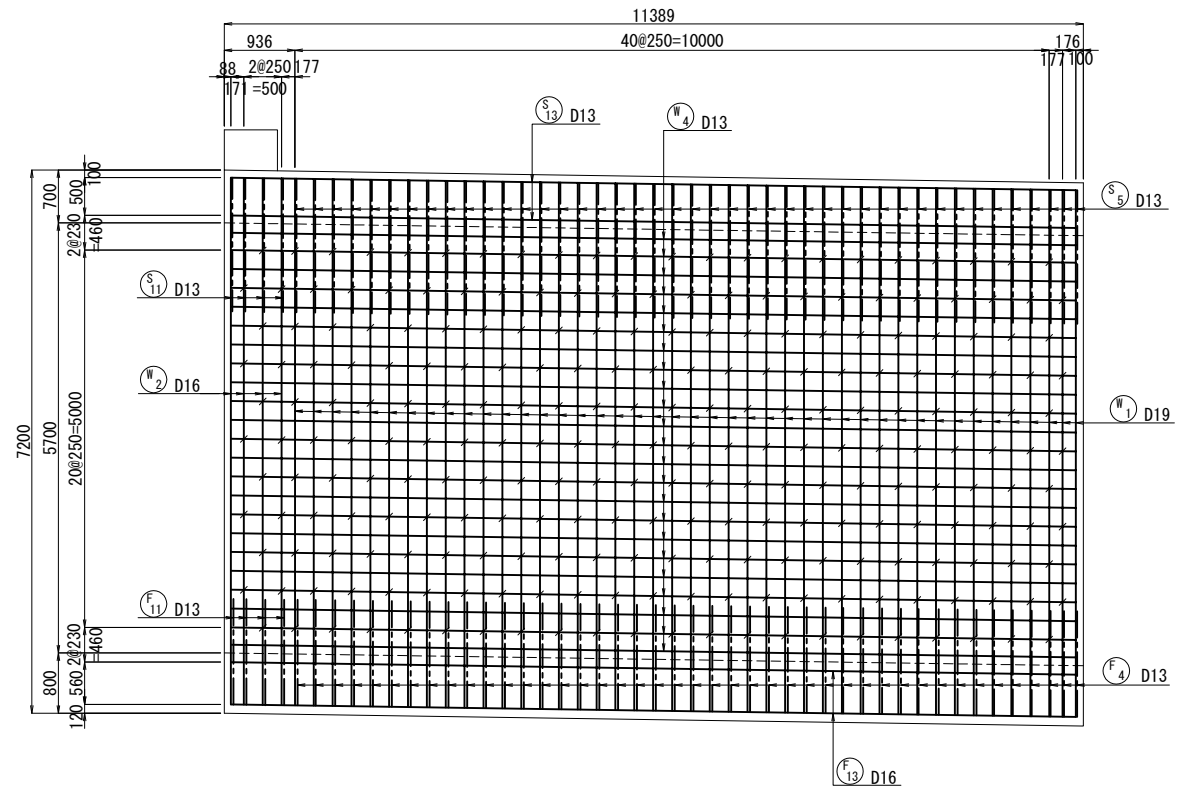
# 函渠工配筋図(2) S=1:50

[本体1ブロック]

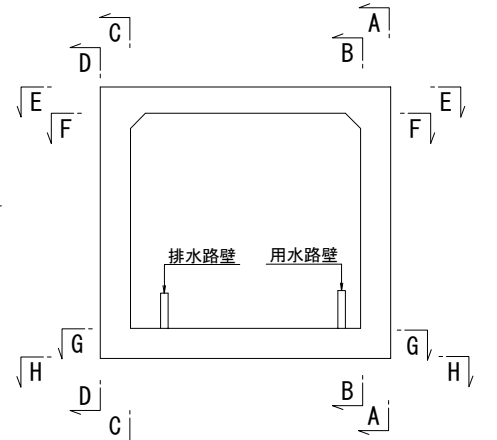
A - A



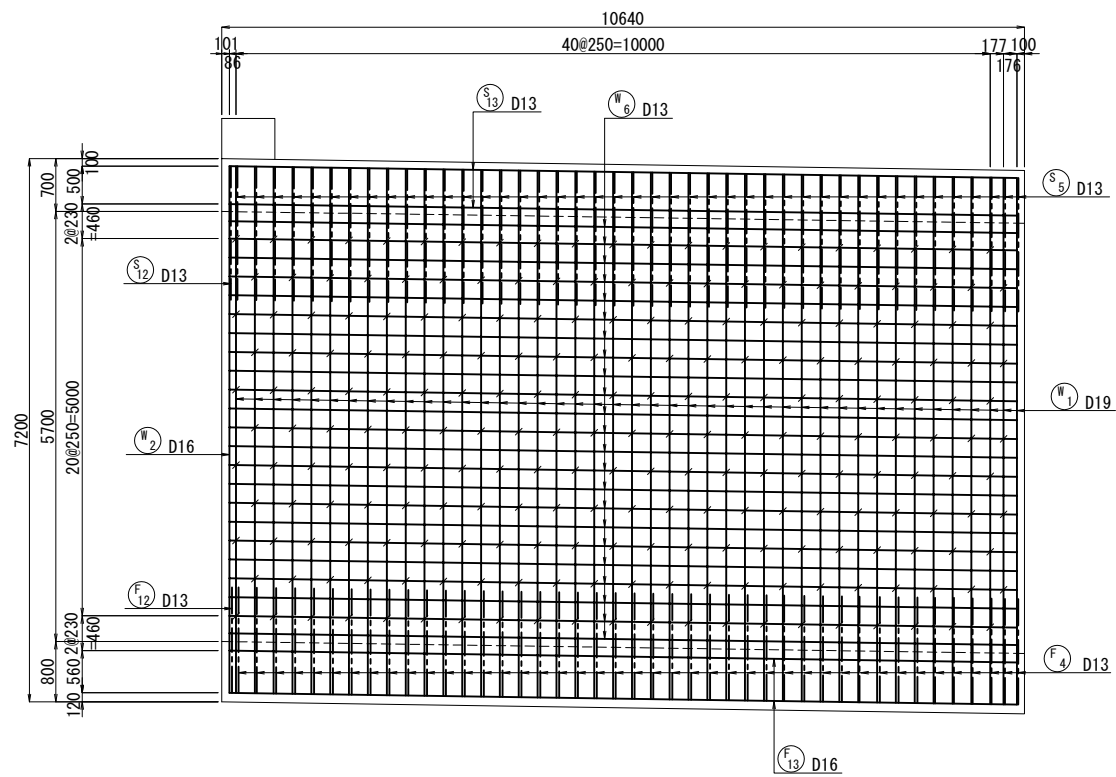
C - C



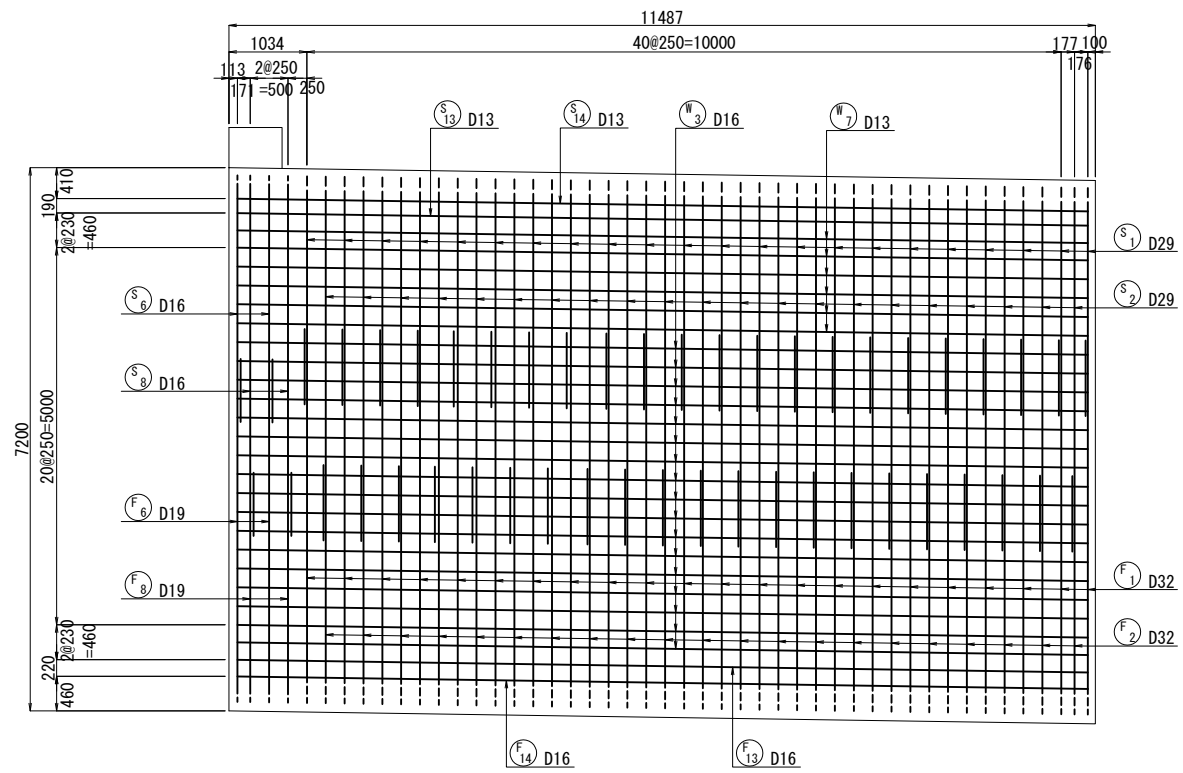
位置図  
(断面図)



B - B

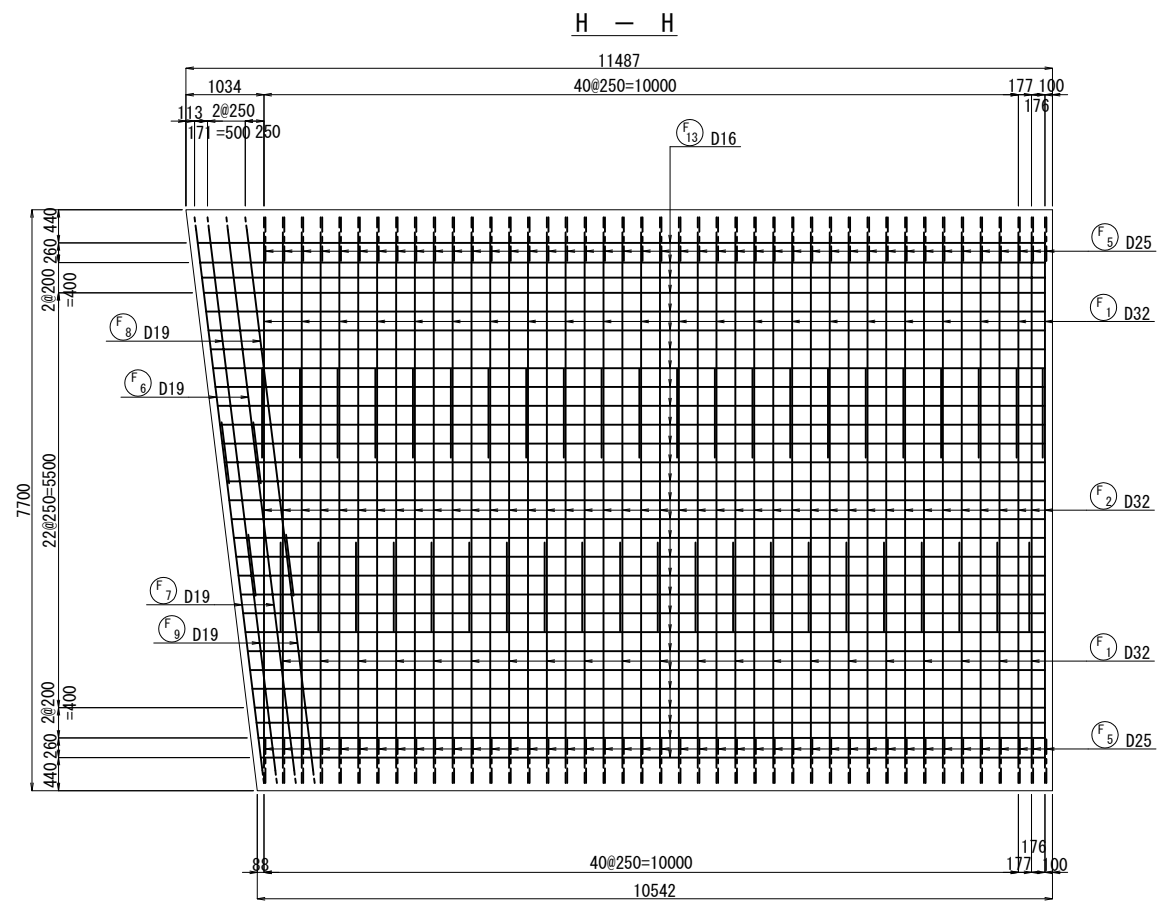
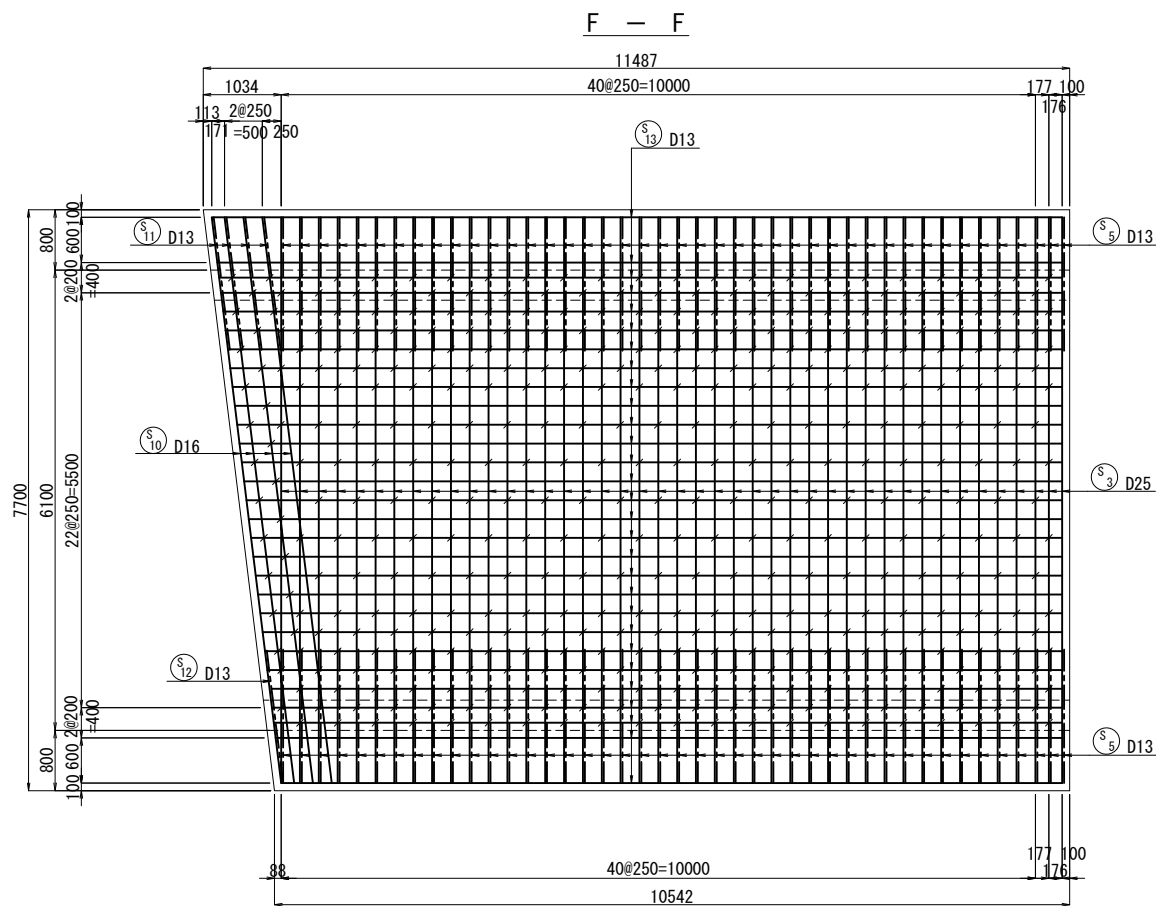
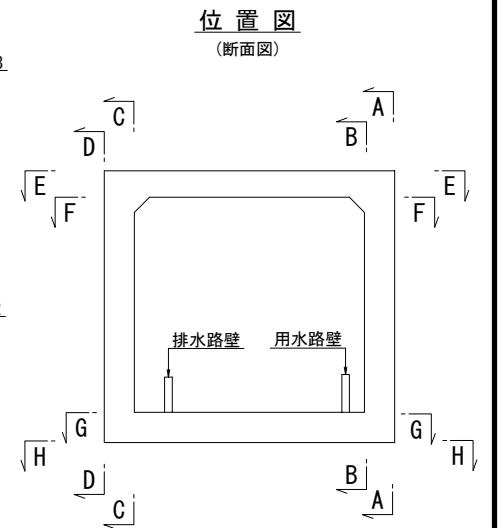
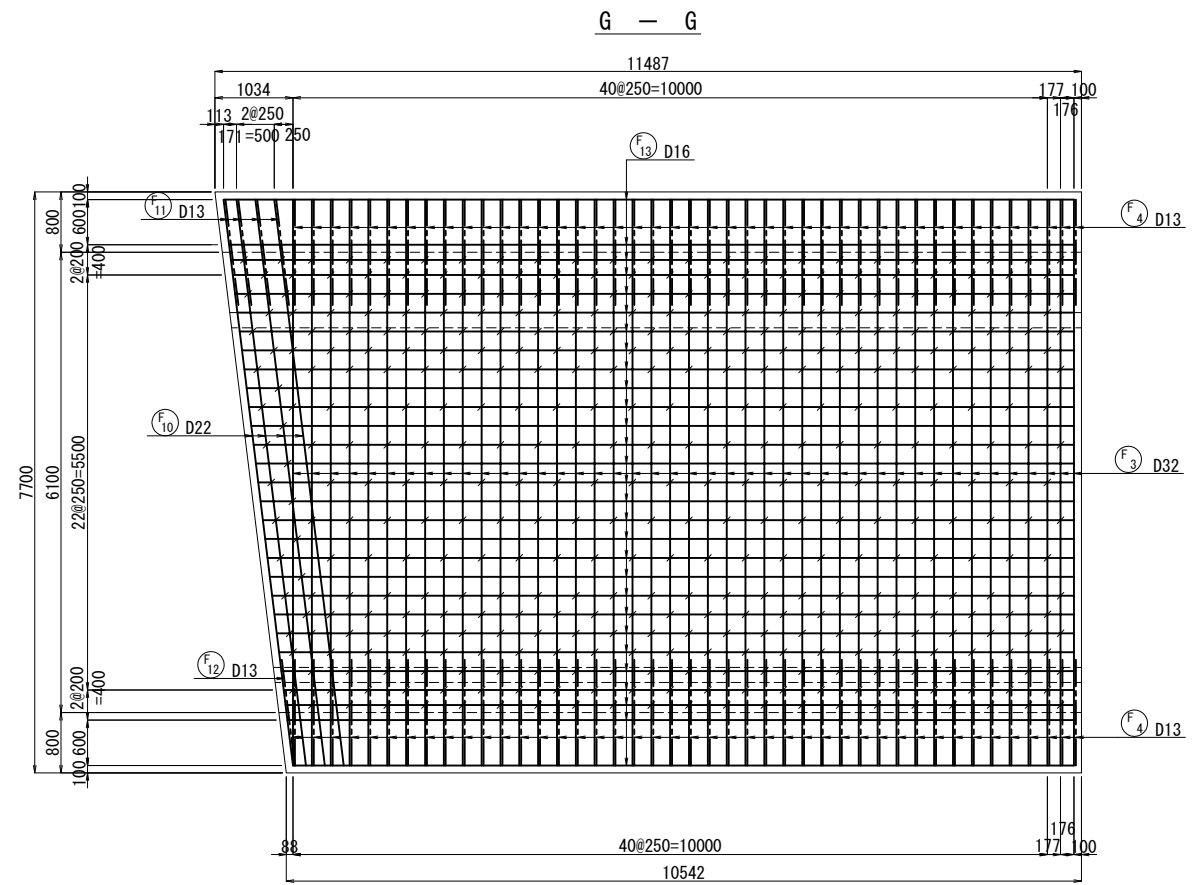
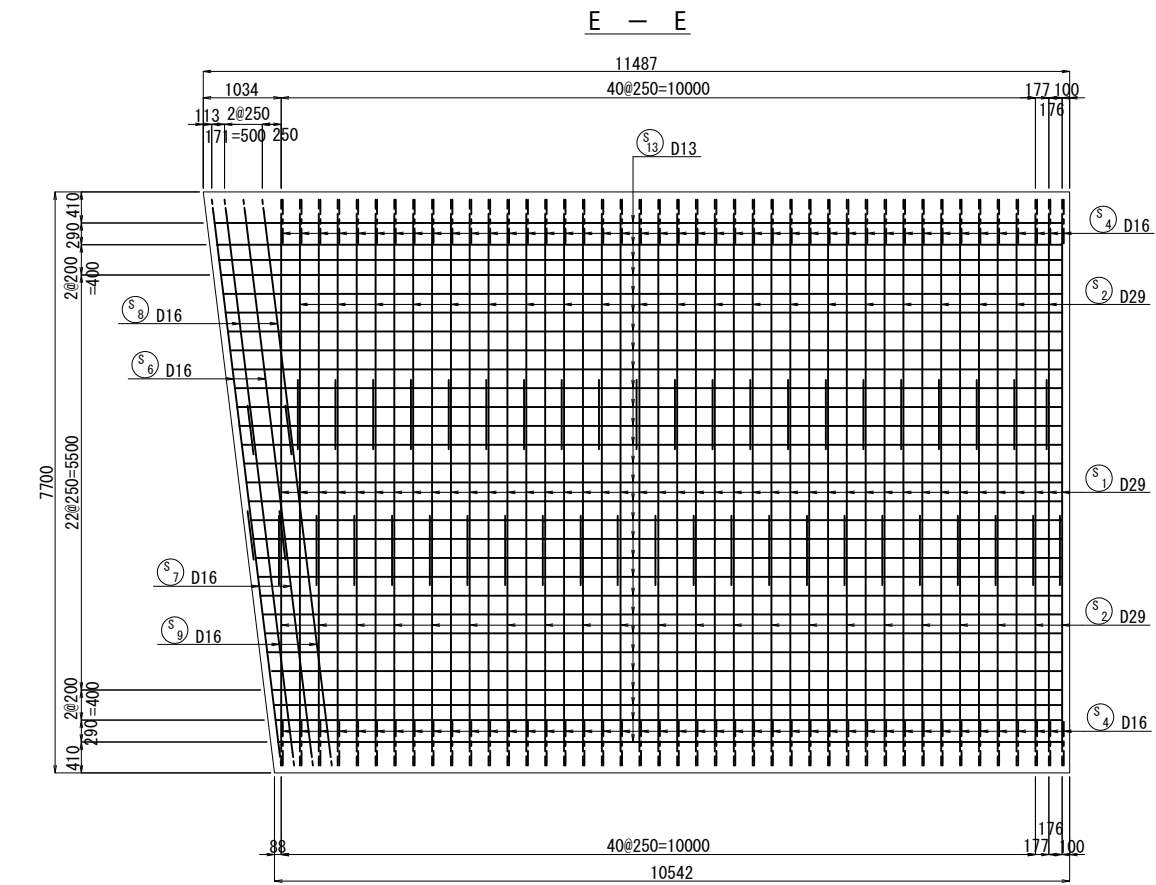


D - D



# 函渠工配筋図(3) S=1:50

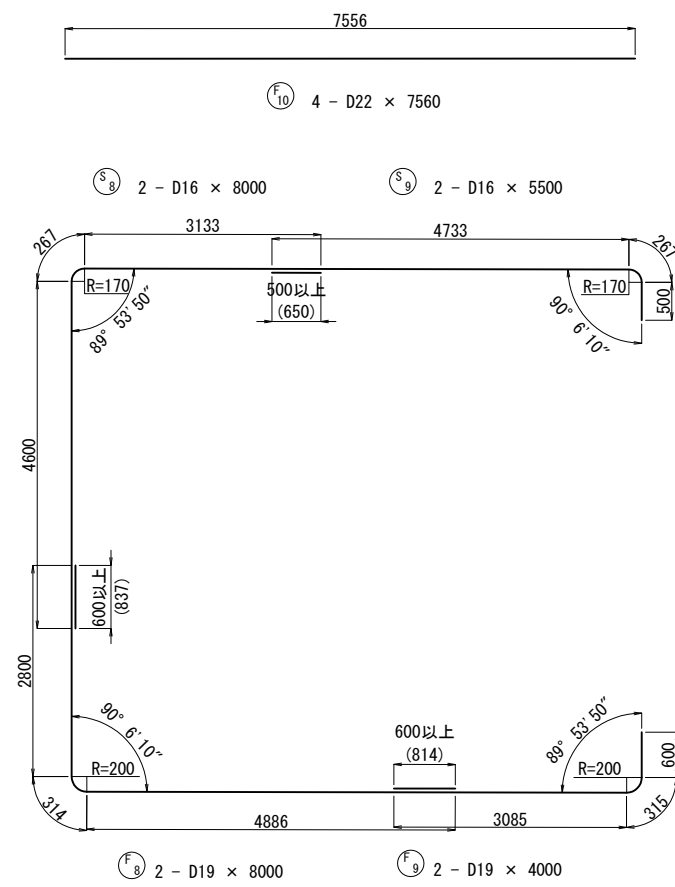
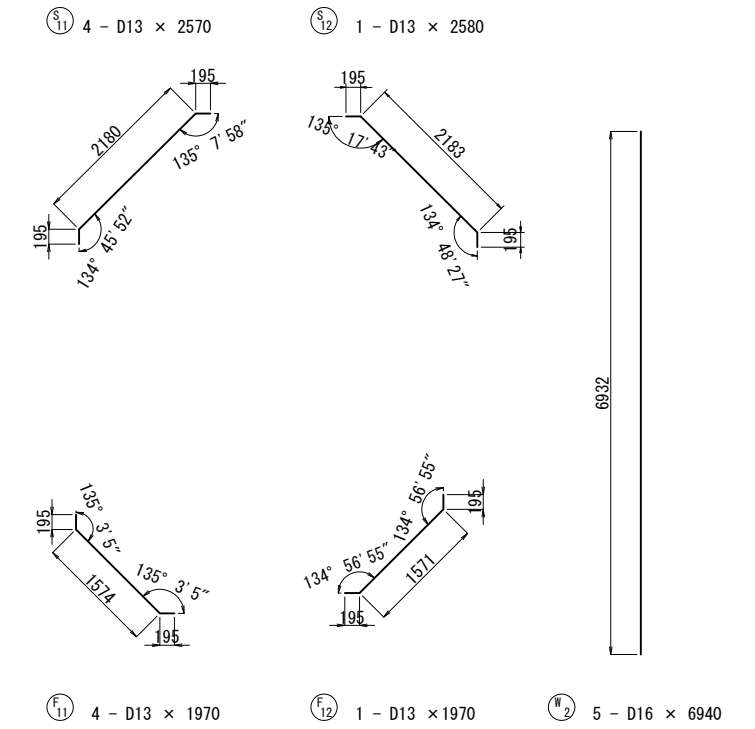
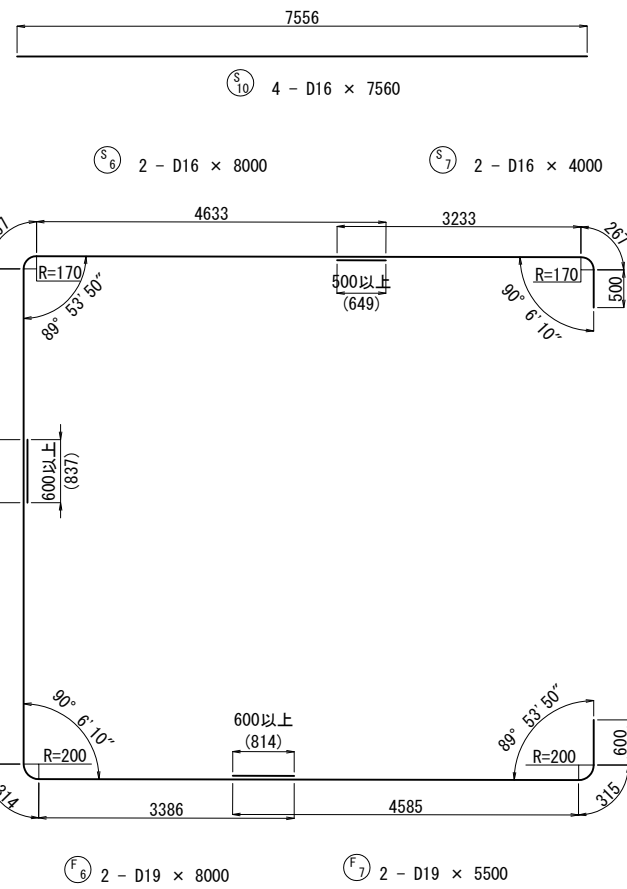
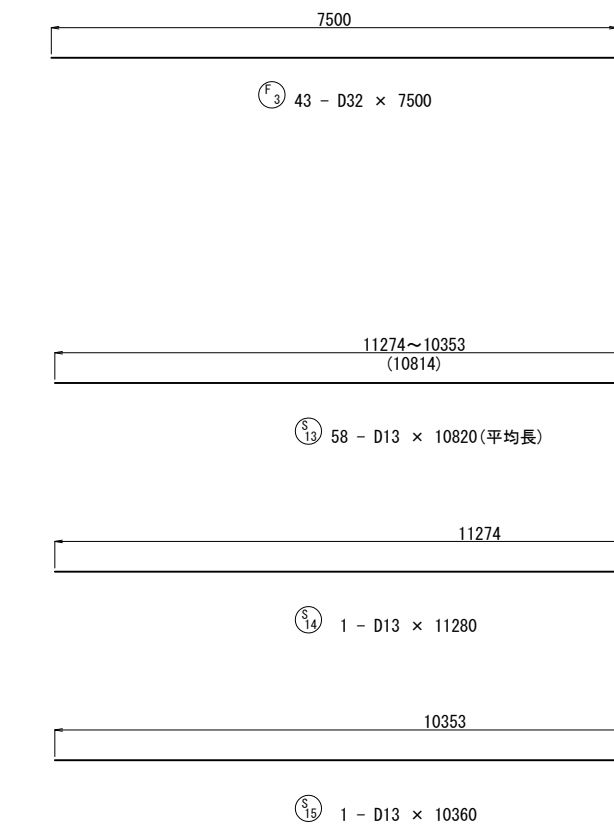
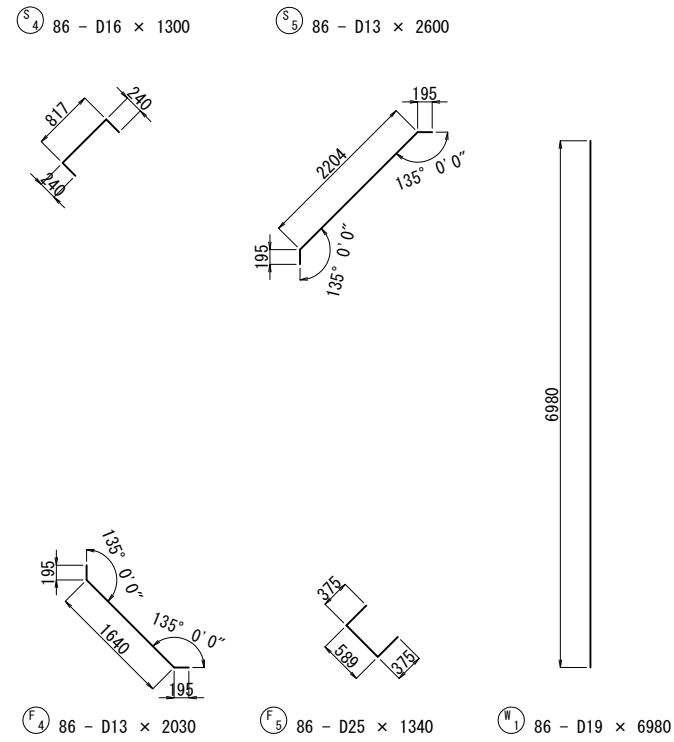
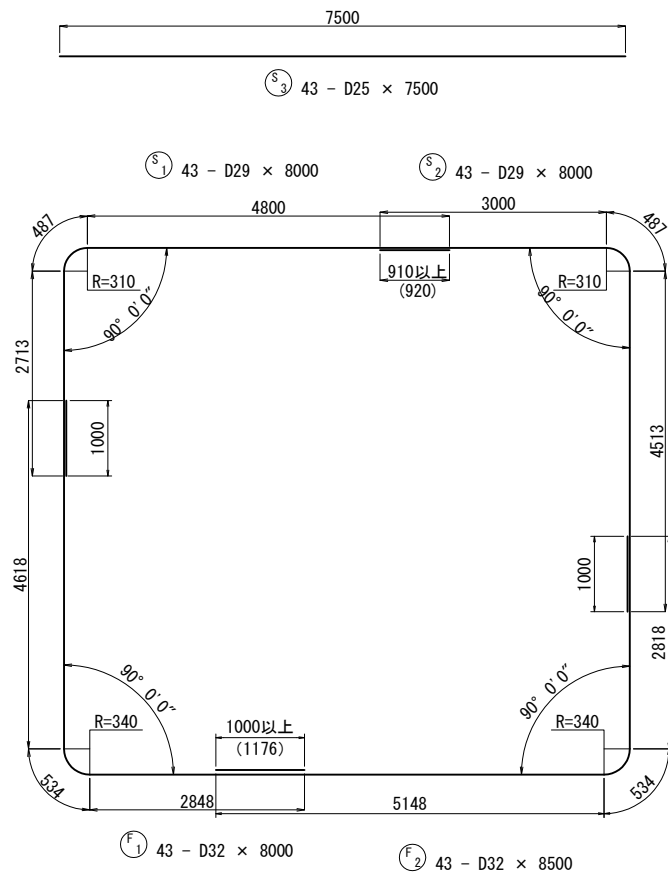
[本体1ブロック]





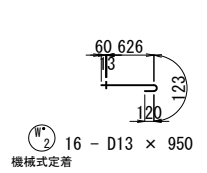
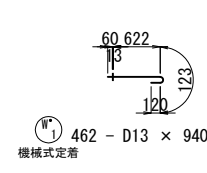
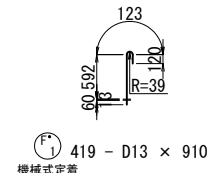
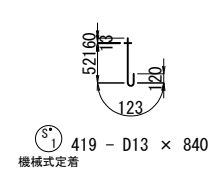
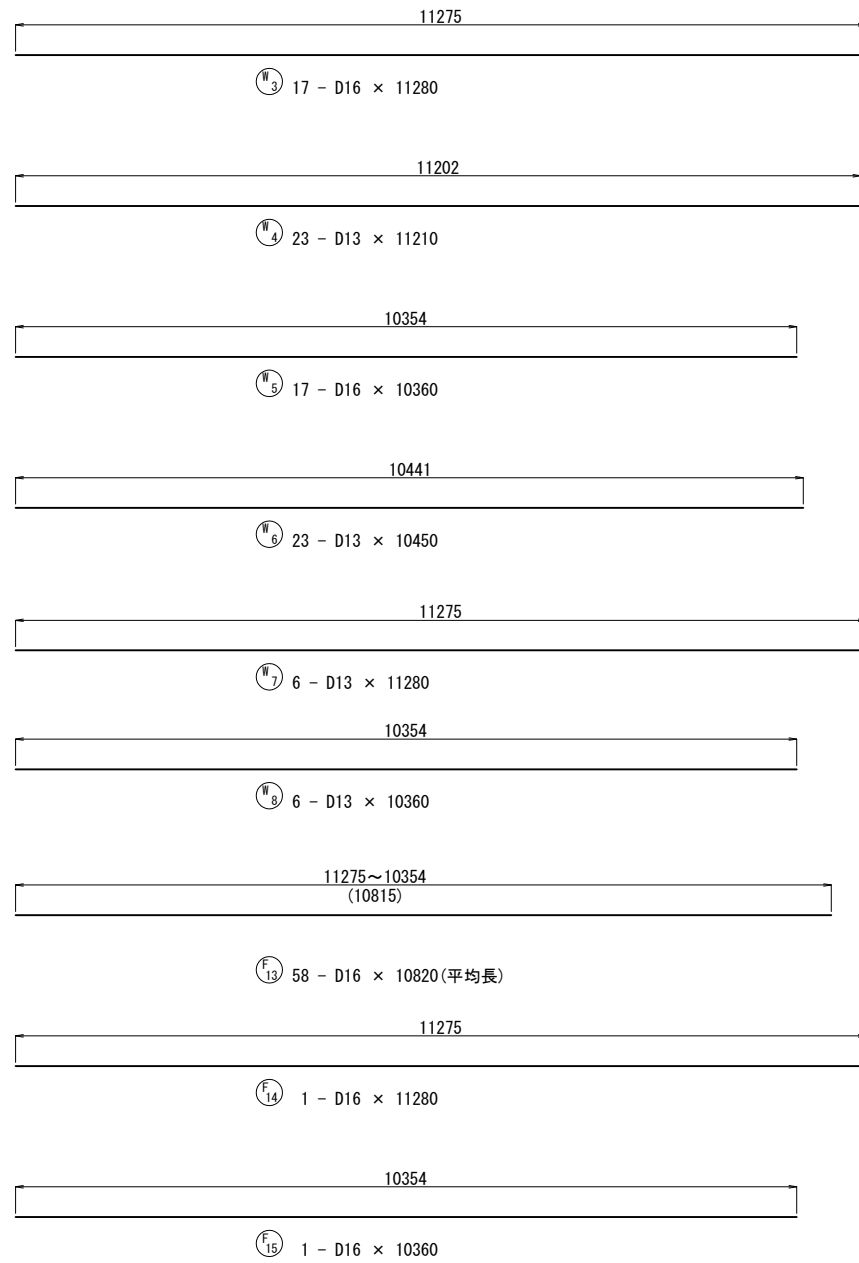
# 函渠工配筋図(5) S=1:50

[本体1ブロック]



# 函渠工配筋図(6) S=1:50

[本体1ブロック]



鉄筋質量表

記号	径	長さ (mm)	本数	単位質量 (kg/m)	1本当り質量 (kg)	質量 (kg)	摘要
S 1	D29	8000	43	5.04	40.32	1734	┌
2	D29	8000	43	5.04	40.32	1734	└
3	D25	7500	43	3.98	29.85	1284	—
4	D16	1300	86	1.56	2.03	175	↙
5	D13	2600	86	0.995	2.59	223	↘
6	D16	8000	2	1.56	12.48	25	┌
7	D16	4000	2	1.56	6.24	12	└
8	D16	8000	2	1.56	12.48	25	┌
9	D16	5500	2	1.56	8.58	17	└
10	D16	7560	4	1.56	11.79	47	—
11	D13	2570	4	0.995	2.56	10	↙
12	D13	2580	1	0.995	2.57	3	↘
13	D13	10820	58	0.995	10.77	625	— (平均長)
14	D13	11280	1	0.995	11.22	11	—
15	D13	10360	1	0.995	10.31	10	—
S* 1	D13	840	419	0.995	0.84	352	↑ <419> (機械式定着)
6287 kg							
W 1	D19	6980	86	2.25	15.71	1351	
2	D16	6940	5	1.56	10.83	54	
3	D16	11280	17	1.56	17.60	299	—
4	D13	11210	23	0.995	11.15	256	—
5	D16	10360	17	1.56	16.16	275	—
6	D13	10450	23	0.995	10.40	239	—
7	D13	11280	6	0.995	11.22	67	—
8	D13	10360	6	0.995	10.31	62	—
W* 1	D13	940	462	0.995	0.94	434	↑ <462> (機械式定着)
2	D13	950	16	0.995	0.95	15	↑ <16> (機械式定着)
3052 kg							
F 1	D32	8000	43	6.23	49.84	2143	┌
2	D32	8500	43	6.23	52.96	2277	└
3	D32	7500	43	6.23	46.73	2009	—
4	D13	2030	86	0.995	2.02	174	↙
5	D25	1340	86	3.98	5.33	458	↘
6	D19	8000	2	2.25	18.00	36	┌
7	D19	5500	2	2.25	12.38	25	└
8	D19	8000	2	2.25	18.00	36	┌
9	D19	4000	2	2.25	9.00	18	└
10	D22	7560	4	3.04	22.98	92	—
11	D13	1970	4	0.995	1.96	8	↙
12	D13	1970	1	0.995	1.96	2	↘
13	D16	10820	58	1.56	16.88	979	— (平均長)
14	D16	11280	1	1.56	17.60	18	—
15	D16	10360	1	1.56	16.16	16	—
F* 1	D13	910	419	0.995	0.91	381	↑ <419> (機械式定着)
8672 kg							
L 1	D13	1520	47	0.995	1.51	71	
2	D13	1580	44	0.995	1.57	69	
3	D13	11080	4	0.995	11.02	44	—
4	D13	10510	4	0.995	10.46	42	—
226 kg							
鉄筋質量集計							機械式定着
				D32	6429 kg	—	
				D29	3468 kg	—	
				D25	1742 kg	—	
				D22	92 kg	—	
				D19	1466 kg	—	
				D16	1942 kg	—	
				D13	3098 kg	<1316>	
				合計	18237 kg	<1316>	

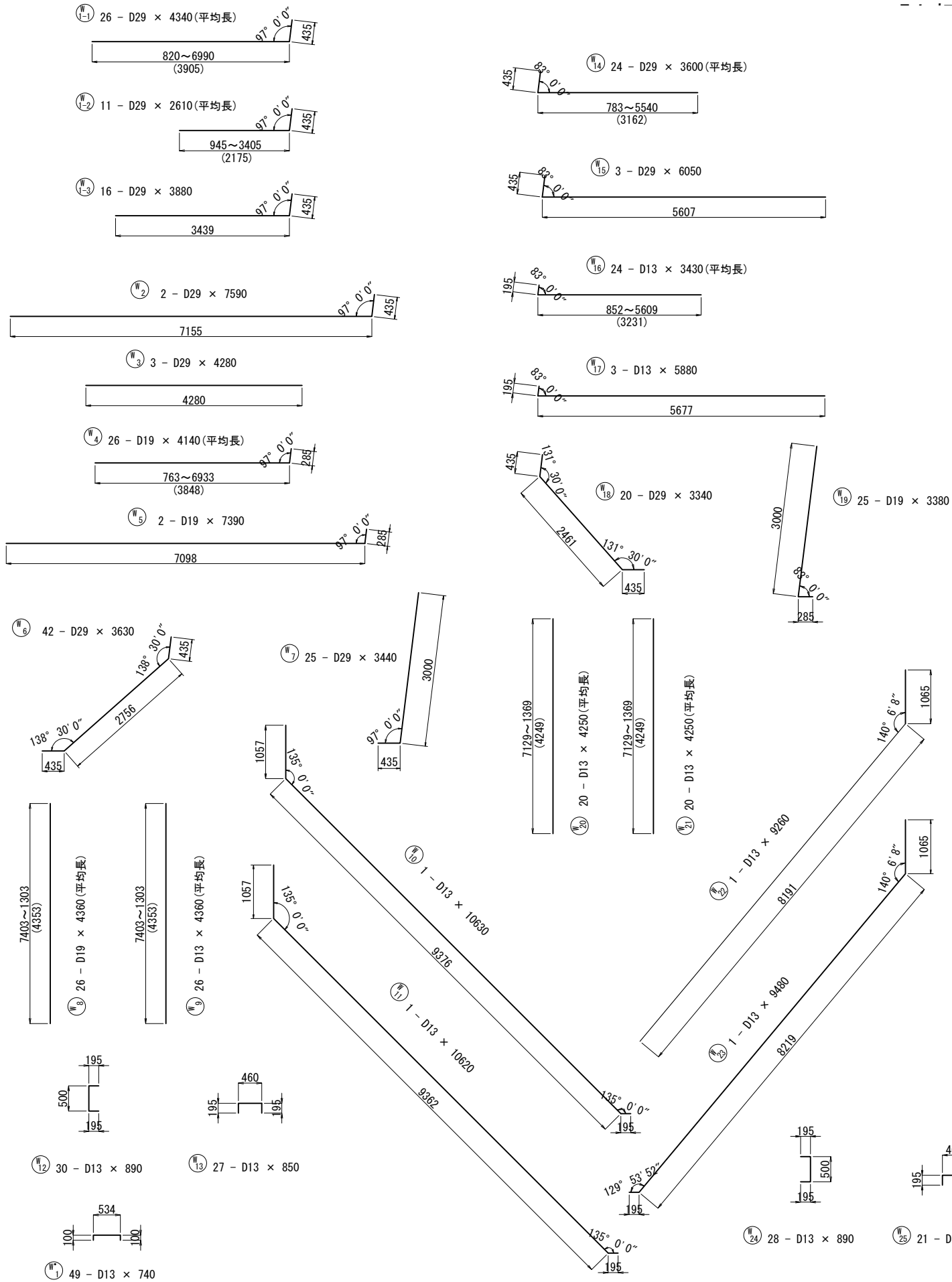






# 函渠工配筋図(20) S=1:50

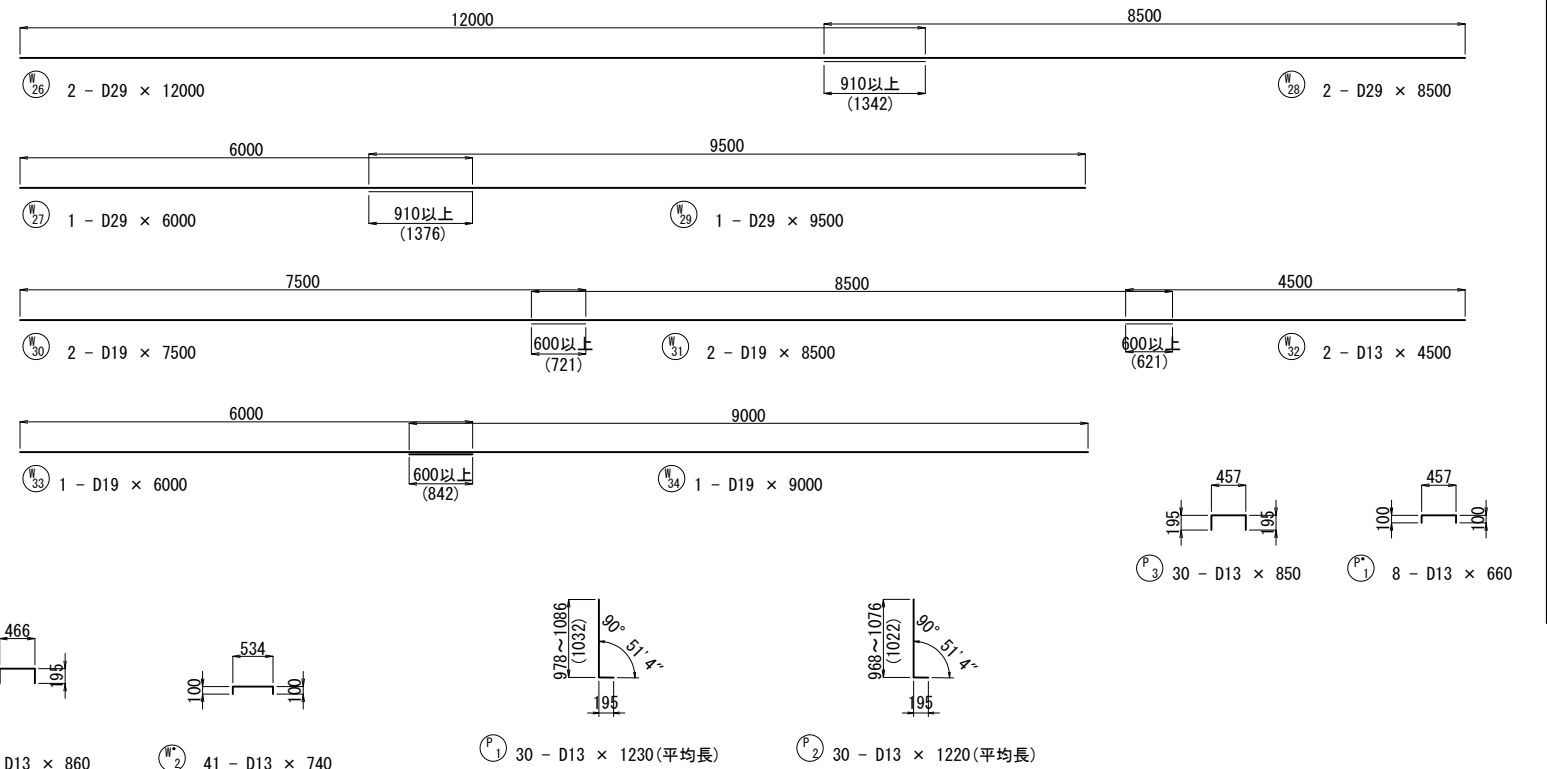
〔左ロウイング〕



鉄筋質量表

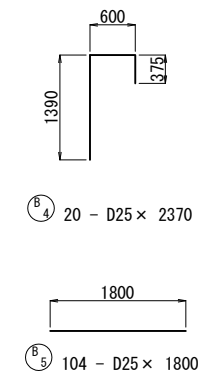
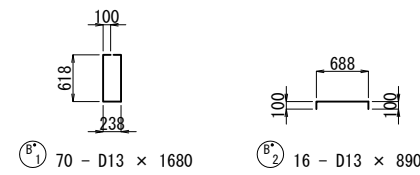
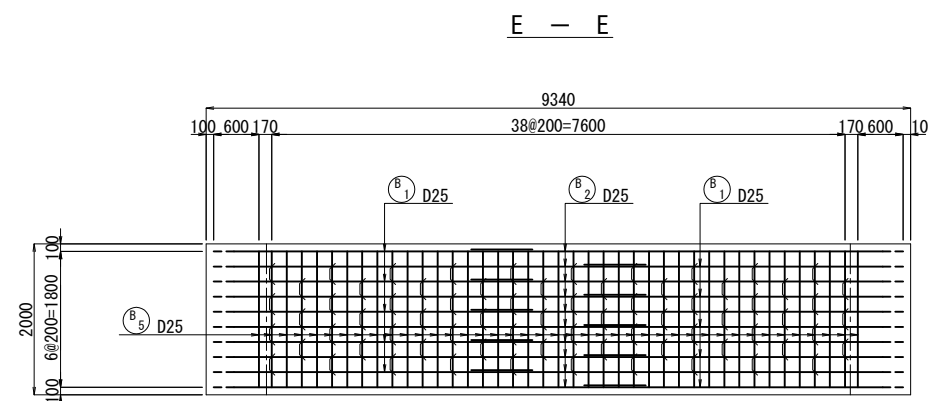
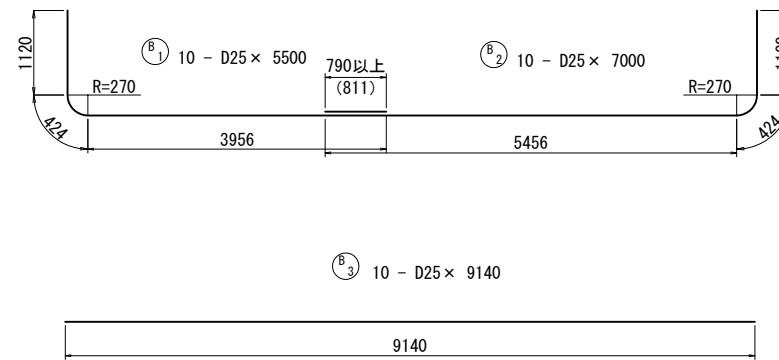
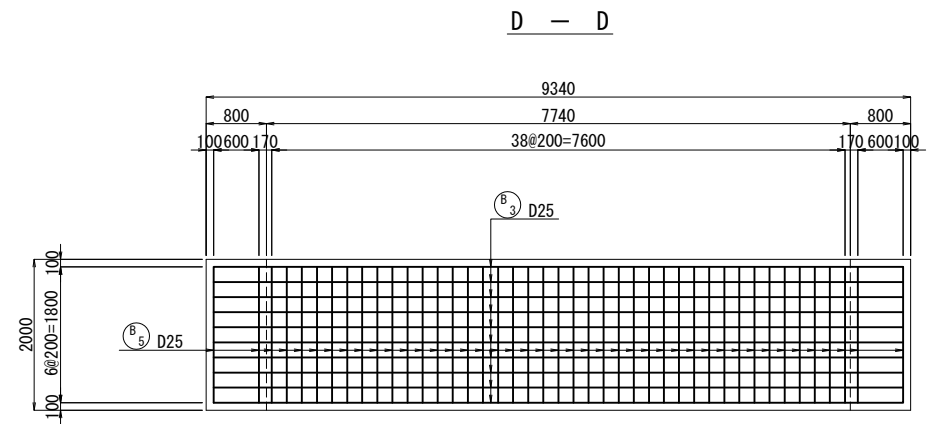
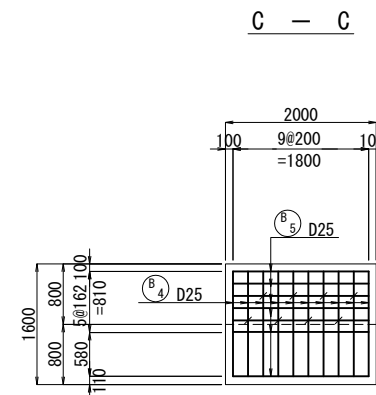
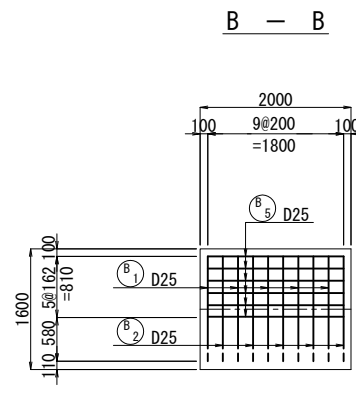
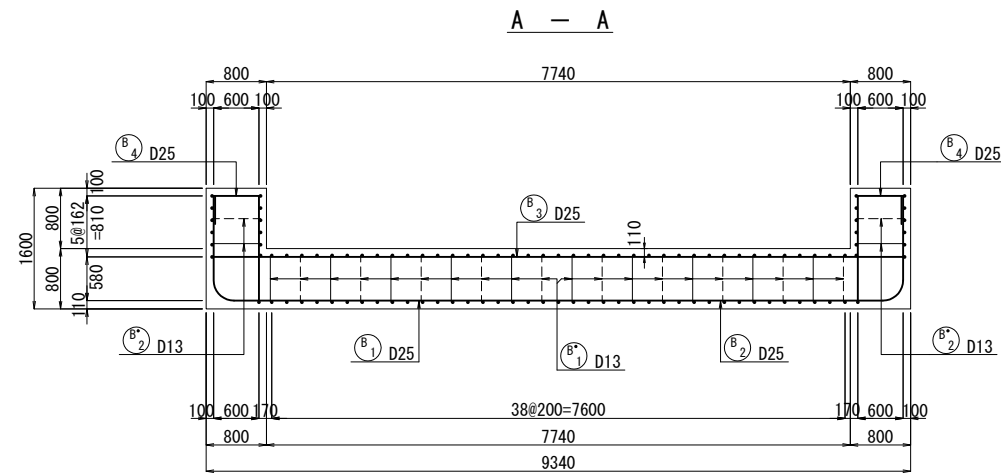
記号	径	長さ (mm)	本数	単位質量 (kg/m)	1本当り質量 (kg)	質量 (kg)	摘要
W 1-1	D29	4340	26	5.04	21.87	569	— (平均長)
1-2	D29	2610	11	5.04	13.15	145	— (平均長)
1-3	D29	3880	16	5.04	19.56	313	—
2	D29	7590	2	5.04	38.25	77	—
3	D29	4280	3	5.04	21.57	65	—
4	D19	4140	26	2.25	9.32	242	— (平均長)
5	D19	7390	2	2.25	16.63	33	—
6	D29	3630	42	5.04	18.30	769	—
7	D29	3440	25	5.04	17.34	434	—
8	D19	4360	26	2.25	9.81	255	— (平均長)
9	D13	4360	26	0.995	4.34	113	— (平均長)
10	D13	10630	1	0.995	10.58	11	—
11	D13	10620	1	0.995	10.57	11	—
12	D13	890	30	0.995	0.89	27	—
13	D13	850	27	0.995	0.85	23	—
14	D29	3600	24	5.04	18.14	435	— (平均長)
15	D29	6050	3	5.04	30.49	91	— (平均長)
16	D13	3430	24	0.995	3.41	82	— (平均長)
17	D13	5880	3	0.995	5.85	18	—
18	D29	3340	20	5.04	16.83	337	—
19	D19	3380	25	2.25	7.61	190	—
20	D13	4250	20	0.995	4.23	85	— (平均長)
21	D13	4250	20	0.995	4.23	85	— (平均長)
22	D13	9260	1	0.995	9.21	9	—
23	D13	9480	1	0.995	9.43	9	—
24	D13	890	28	0.995	0.89	25	—
25	D13	860	21	0.995	0.86	18	—
26	D29	12000	2	5.04	60.48	121	—
27	D29	6000	1	5.04	30.24	30	—
28	D29	8500	2	5.04	42.84	86	—

記号	径	長さ (mm)	本数	単位質量 (kg/m)	1本当り質量 (kg)	質量 (kg)	摘要
W 29	D29	9500	1	5.04	47.88	48	—
30	D19	7500	2	2.25	16.88	34	—
31	D19	8500	2	2.25	19.13	38	—
32	D19	4500	2	2.25	10.13	20	—
33	D19	6000	1	2.25	13.50	14	—
34	D19	9000	1	2.25	20.25	20	—
W' 1	D13	740	49	0.995	0.74	36	—
2	D13	740	47	0.995	0.74	35	—
4953 kg							
P 1	D13	1230	30	0.995	1.22	37	L (平均長)
2	D13	1220	30	0.995	1.21	36	L (平均長)
3	D13	850	30	0.995	0.85	26	—
P' 1	D13	660	8	0.995	0.66	5	—
104 kg							
D29 3520 kg							
D19 846 kg							
D13 691 kg							
合計 5057 kg							



# 函渠工配筋図(24) S=1:50

## [段落防止枕]



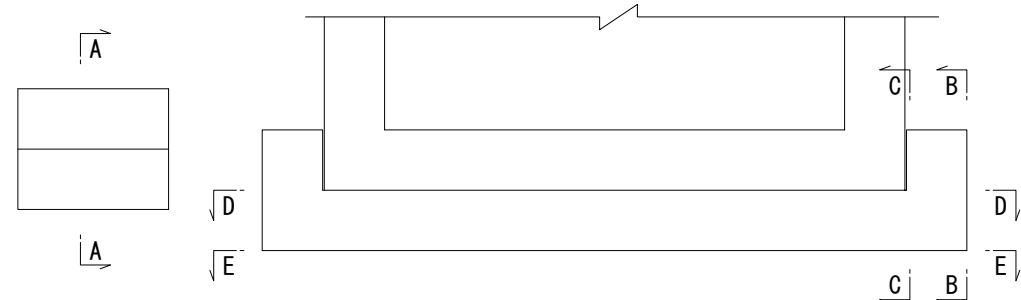
鉄筋質量表

記号	径	長さ (mm)	本数	単位質量 (kg/m)	1本当り質量 (kg)	質量 (kg)	摘要
B 1	D25	5500	10	3.98	21.89	219	┌
2	D25	7000	10	3.98	27.86	279	└
3	D25	9140	10	3.98	36.38	364	┌
4	D25	2370	20	3.98	9.43	189	└
5	D25	1800	104	3.98	7.16	745	┌
B' 1	D13	1680	70	0.995	1.67	117	└
2	D13	890	16	0.995	0.89	14	┌
				1箇所当たり	箇所数	合計	
				D25	1796 kg × 2	= 3592 kg	
				D13	131 kg × 2	= 262 kg	
				合計	1927 kg × 2	= 3854 kg	

位置図

(縦断面図)

(断面図)



全体位置図

